

2017 PROGRESS IN NUMBERS



This infographic highlights the cumulative progress and scale* Cocoa Life achieved by the end of 2017 in four key cocoa origins: Ghana, Côte d'Ivoire, Indonesia and Dominican Republic.

The Cocoa Life approach is holistic and includes both farming and non-farming activities and services across five focus areas to create thriving cocoa communities. We work with a diverse group of partners to meet the specific needs of each region. We also routinely collect data from them to review how our programs are performing and assess how we can continue to improve outcomes. These numbers reflect total progress compared to 2016 and represent our journey to sustainably sourcing cocoa, mainly from Cocoa Life communities.



FARMING

We trained 88,134 farmers (+18%) and distributed nearly 5.8 million cocoa seedlings (+111%) to increase productivity and promote growth of higher-quality cocoa. We also mapped nearly 136,000 hectares of cocoa farms (+18%) to more accurately measure farm productivity and understand farmers' proximity to protected forest areas, helping us to take action against deforestation.



COMMUNITY

We facilitated the development of Community Action Plans (CAPs) in 1,030 communities (100% of Cocoa Life communities in these countries), helping them identify their needs and secure resources and public funding. CAPs are driven and owned by the community and give women a voice in decision-making.



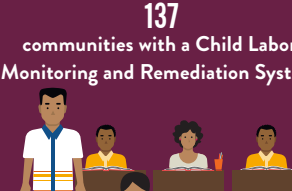
LIVELIHOODS

We provided nearly 52,000 community members (+131%), mostly women, with access to finance and improved their financial literacy through 1,828 operational Village Savings and Loan Associations (VSLAs) (+51%). Members use these funds for investments, start-up capital for new businesses, farm rehabilitation, children's school fees and farm labor. Cocoa Life also trains community members to obtain additional sources of income, including from other food crops or small enterprises.



YOUTH

We established Child Protection Committees in 516 communities, building on our holistic interventions to tackle the root causes of child labor. Child Labor Monitoring and Remediation Systems (CLMRS) are operational in 137 of these communities (+43%); another 166 are receiving CLMRS training in Ghana. The program will continue to expand in 2018.



ENVIRONMENT

Increasing cocoa farming communities' resilience to climate change is urgent. We trained nearly 68,200 community members on Good Environmental Practices (+96%) and distributed more than one million shade trees (+43%) to conserve natural ecosystems and provide viable environments and farmland for future generations.



*Impact against our global Key Performance Indicators is measured separately.